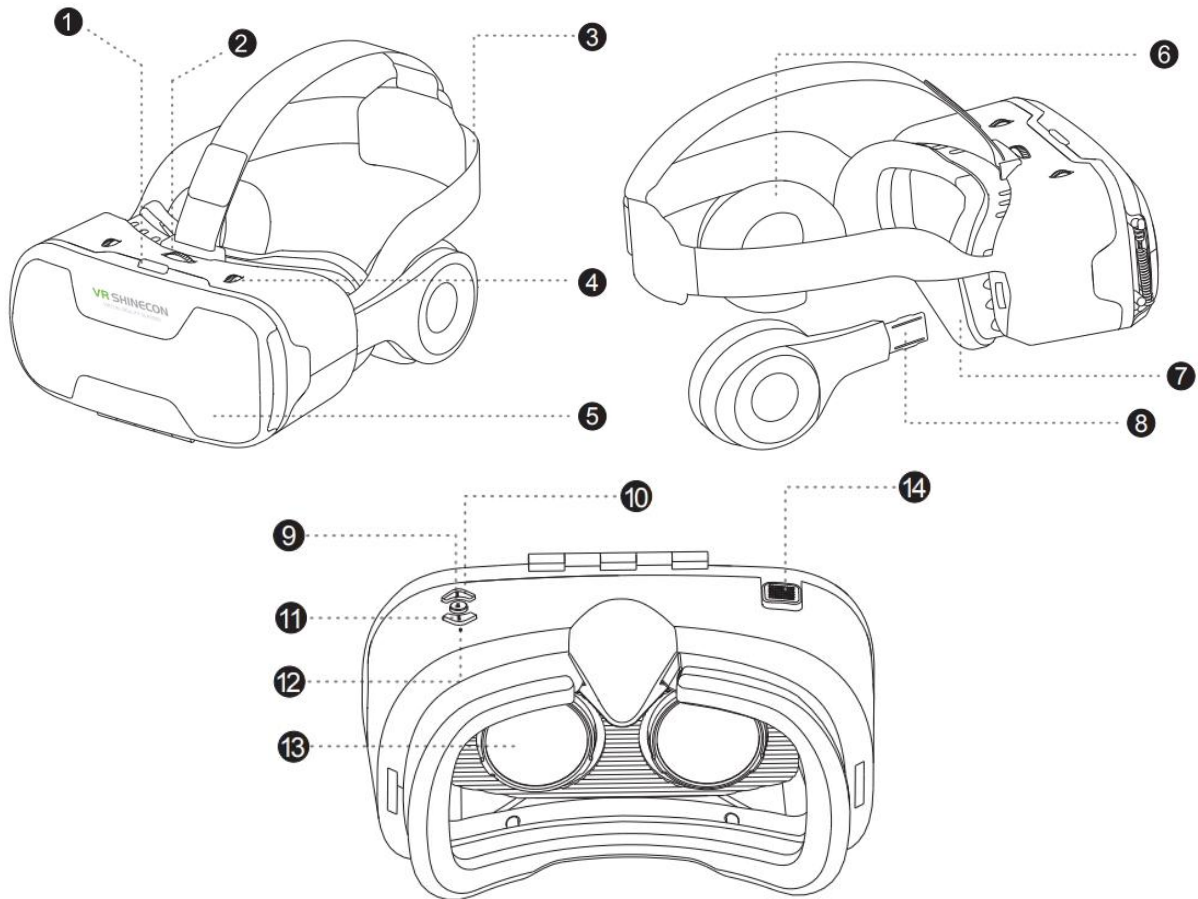


User Guide for VR headset SC-G02ED



Specifications

- Lens type: aspherical optical resin
- Lens diameter: 42mm
- Field of view (FOV): 110 degree
- Headphones connector: 3.5mm audio jack
- Supported OS: Android, iOS, Windows
- Compatible with 4.7"-6" smartphones
- Control buttons for volume, play/stop, calls
- Material: ABS

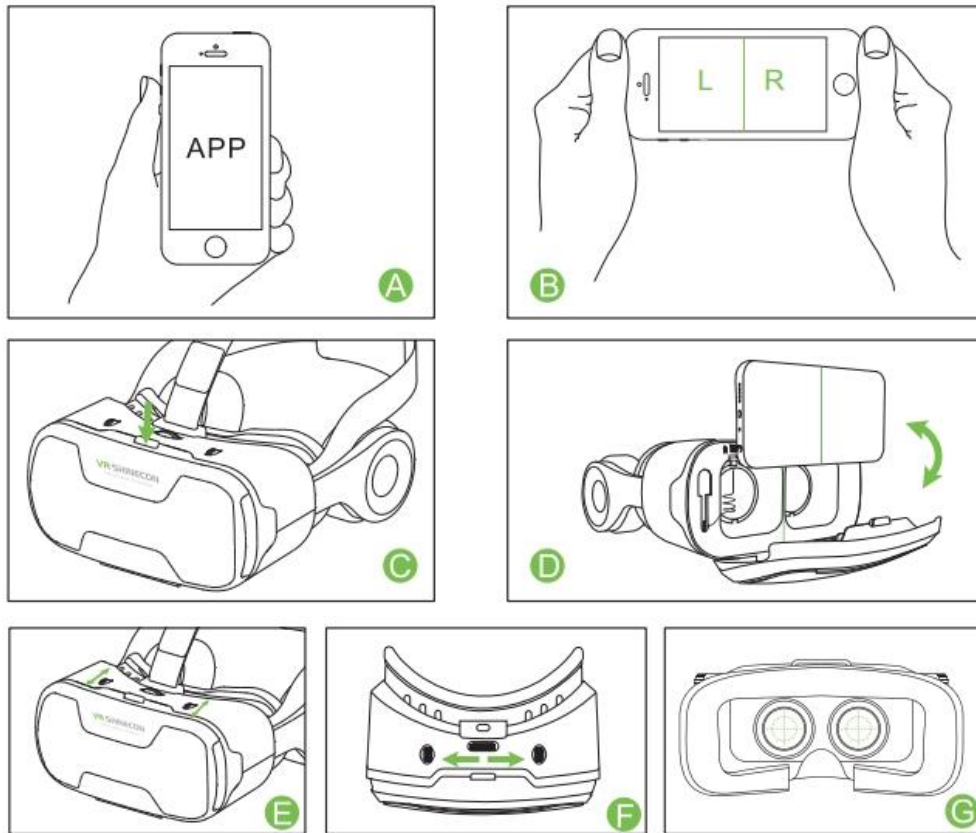


- | | |
|------------------------------|--------------------------------|
| 1. Buckled switch | 8. Headset flexible adjustment |
| 2. Pupil distance adjustment | 9. Multifunction button |
| 3. Ergonomic belt | 10. Volume up |
| 4. Focus distance adjustment | 11. Volume down |
| 5. Adsorption panel | 12. Hidden microphone |
| 6. HiFi headphones | 13. Optical lens |
| 7. Leather patch | 14. Touch screen button |

The multifunctional button functions:

- a) Answer/Reject phone calls
- b) Play/Pause
- c) Previous/Next

How to use



Go to the Google Play Store for Android or App Store for iOS and download a VR app (picture A). Install it and open some video or a VR game to test the screen whether can split into two sides (picture B). After you see it works fine, open the top buckle carefully (picture C), and insert your smartphone. Bear in mind that the display should be facing towards the lens. Align the axis and close the cover (picture D). Put the VR headset on your head and adjust the Focus distance (picture E) and Pupil distance (picture F) for the best experience.

Please note that this VR headset is also suitable for people with glasses.